



SOCIETAT CORAL
EL MICALET

FONS MUSICALS PER A ORQUESTRA DE POLS I PUA

205 CHURUMBELERIAS

EMILIO CEBRIÁN RUÍZ



CHURUMBELERIAS



PASODOBLE TRANQUILO (♩=90)

musics de EMILIO CEBRIAN RUIZ

♩

mf 3 3 3 3 3 3 ff

9 3 3 3 3 3 3 ff

17 3 3 ff

25 3 3 3 p 3 3 3 3 3

32 3 3 3 3 3 5 3 3 5

38 3 3 3 3 5 3

46 5 5

53 3 ff

60

67 cresc.

73 3

2 CHURUMBELERIAS-Bandurria 1ª

80



87

94

100

107

113

120

127

134

141

148

3

3

3

3

1. 2.

ff

rit. *a tempo*

A LA  y CODA

Detailed description: This page contains the musical score for the first part of the piece 'Churumbeleries' for Bandurria 1st. It consists of ten staves of music. The key signature is three sharps (F#, C#, G#) and the time signature is 3/8. The score includes various musical notations such as eighth notes, quarter notes, and triplet markings. Performance instructions include 'rit.' (ritardando) and 'a tempo' (return to tempo). A dynamic marking of 'ff' (fortissimo) is present. The piece concludes with a Coda symbol and the instruction 'A LA CODA y CODA'. Measure numbers 80, 87, 94, 100, 107, 113, 120, 127, 134, 141, and 148 are indicated at the start of their respective staves.

CHURUMBELERIAS



PASODOBLE TRANQUILO (♩=90)

musics de EMILIO CEBRIAN RUIZ

9

18

27

34

44

54

61

68

74

81

mf

ff

pp

pp

p

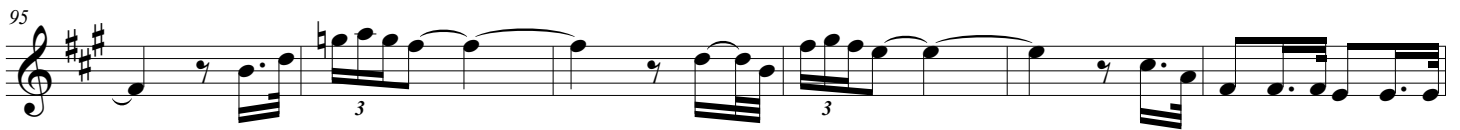
ff

cresc.

88




95



101



107



113



120



128



136



143



CHURUMBELERIAS



PASODOBLE TRANQUILO (♩=90)

musics de EMILIO CEBRIAN RUIZ

8 *mf* 3 3 3 3 3 3

7 3 3 3 3

14 *ff* *ff* *mf* 3 *ff*

22 3 3

30 *p*

37

45 3

54 *ff*

62 *cresc.*

69 3

76 3

2

CHURUMBELERIAS-Laúd

83



91



98



105



113



121



130



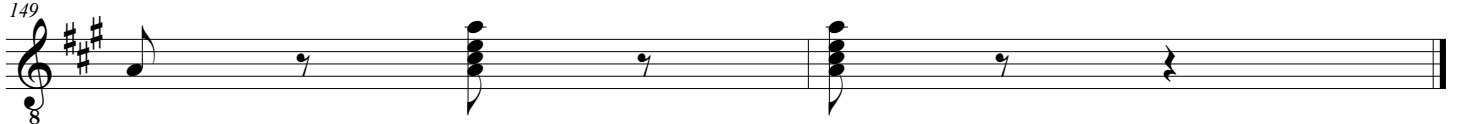
139



142



149



CHURUMBELERIAS

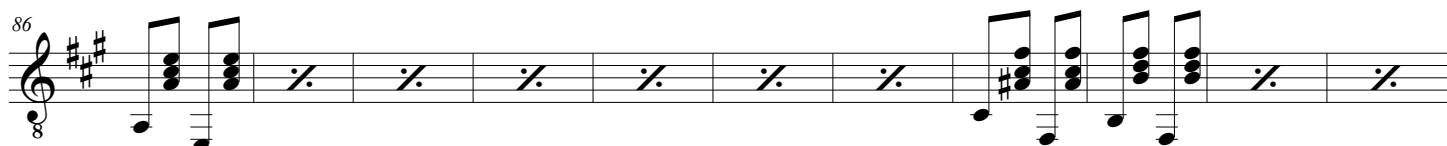


musics de EMILIO CEBRIAN RUIZ

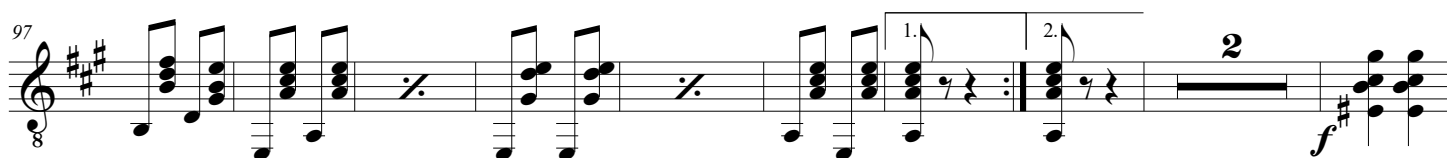
PASODOBLE TRANQUILO (♩=90)

8 4 *mf* 4 *ff* *ff* *p* *ff* *cresc.*

86



97



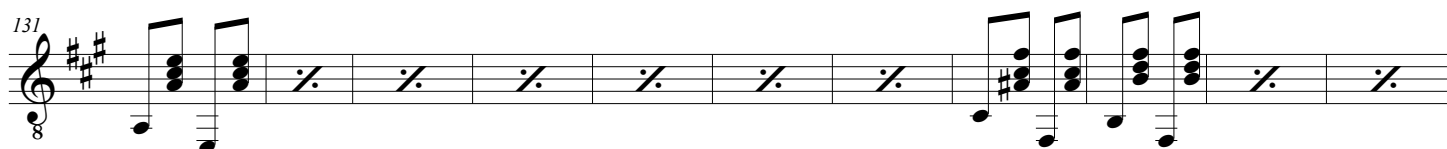
108



117



131



142

